



**Smart Irrigation**  
From the Ground Up

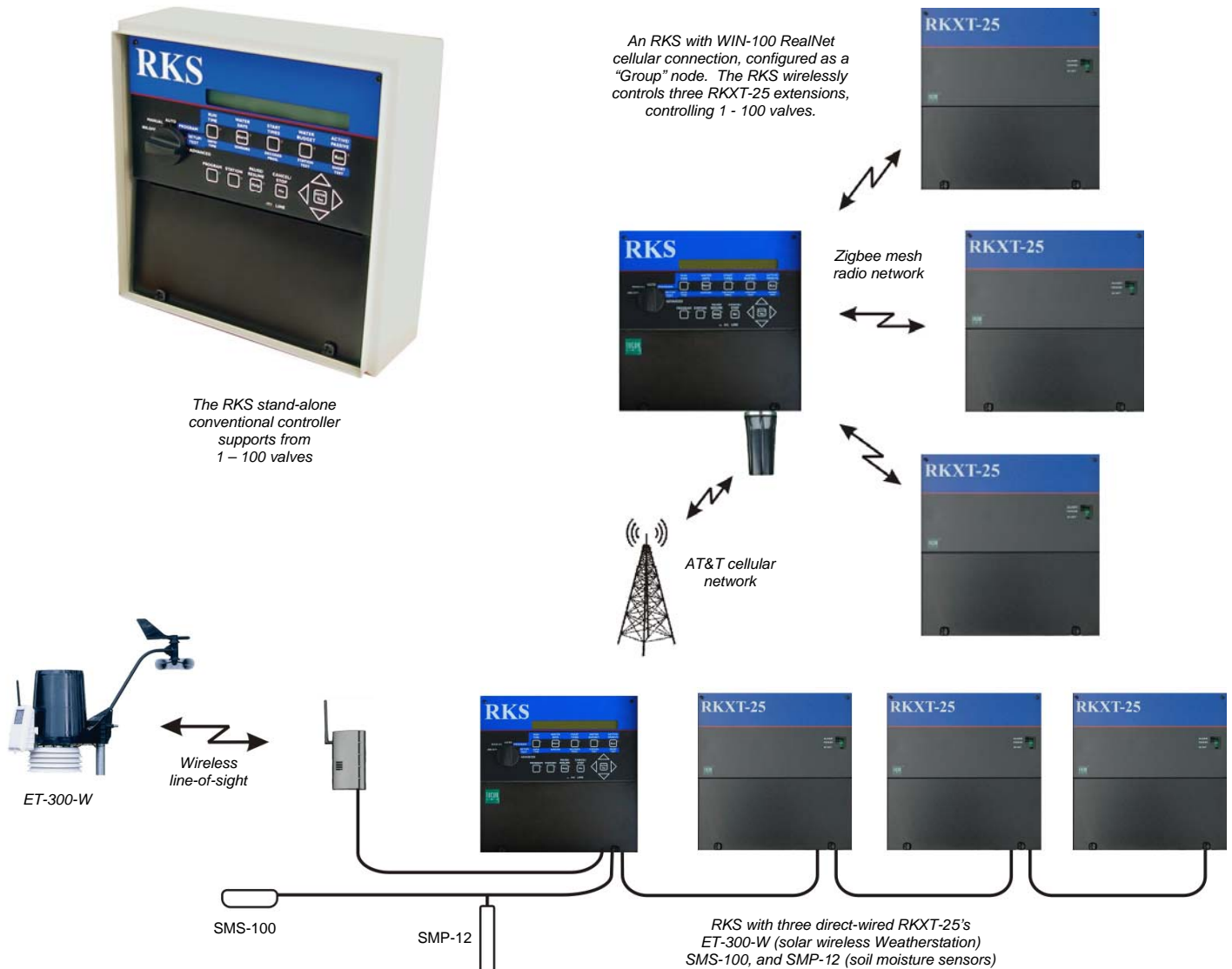
(800) 272-7472  
www.tucor.com

**THE RKS IS A STAND-ALONE**, conventional controller, expressly designed for converting conventional systems to Tucor's exceptional remote management system. The RKS can operate up to 12 Stations simultaneously and up to 100 valves\*. Our unique "Add-A-Zone" feature allows you to add Stations one at a time as your system grows. The RKS's simple, intuitive programming comes with a wealth of controller capabilities.

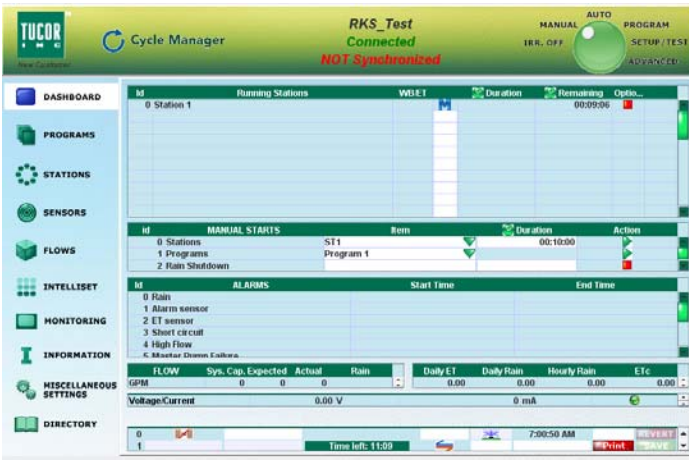
Operations include up to 10 Programs running simultaneously; timing per valve in one-second increments; flow sensing; multiple alarm options; ET inputs; remote control via Internet either browser-based or locally; and many flow management methods.

Power and flexibility arise from:

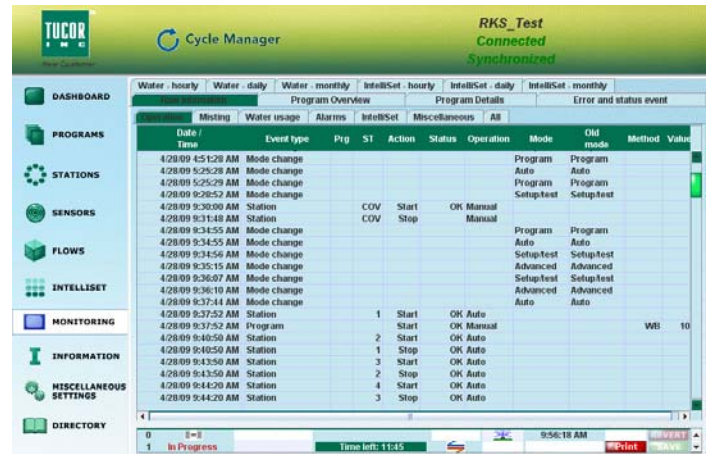
- Mist Manager – Configured as 100 Programs, one valve per Program, running in one second increments
- FloStack™ – Program stacking based on flow for up to 10 simultaneous Programs
- RealNet – Real-time, Internet-based water management via GPRS wireless or a LAN
- IntellisET – Smart irrigation using a host of ET-based capabilities
- FloGuard – Alarm and control options based on flow monitoring



# SPECIFICATIONS



RealNet Web-browser  
real-time remote control



RealNet  
Monitoring Data

## HARDWARE:

### ELECTRICAL:

Input: 115 VAC, 50 VA

Output: 24 VAC

### STATIONS:

1-100, priced in single station increments †

### MAXIMUM SIMULTANEOUS ACTIVE VALVES:

6 max per cabinet, 12 max per system \*

### MASTER VALVES:

1, 10 second stop delay

### BOOSTER PUMPS:

2, 10 second stop delay

### CABINET:

Wall mounted NEMA 4 rated locking metal cabinet with internal Class 2 transformer

### DIMENSIONS:

12" H x 12" W x 5" D (approx)

### LIGHTNING PROTECTION:

Built-in

### VALVE OUTPUT:

24 VAC, 1.0 A per station max., 1.5 A total max.

## OPERATING FEATURES:

### PROGRAMS:

10 + 1 test program

### CONCURRENT PROGRAMS:

10

### START TIMES:

12 per program, 1 - 99 repeats per start

### CALENDAR:

14 days or Odd/Even

### STATION RUN TIMES: 0-999 MINUTES:

1 second increments (< 4 minutes)

10 second increments (4 - 999 minutes)

### WATER BUDGET:

0-250% @ 1% increments

### PROGRAM MODES:

Active & Passive

### START METHODS:

Auto, Manual by Program, Manual by Station

### DISPLAY:

Monitors active programs, run times, and alarms

## REMOTE MANAGEMENT:

- Via the Internet<sup>‡</sup> and any web browser when the RKS is equipped with

- Tucor's WIN-xxx module and GPRS service, or

- Tucor's LAN-100 with your own Local Area Network

- Remote line-of-sight radio operations (RFA-200) to enable valves and Programs

### ET:

ET Capable (requires ET weather station or WR-7RKD)

Local Weather Station: Pulses:

50 ms minimum width

2 pulses per second maximum

Maximum ET (prevent short run time)

Maximum ET (prevent run-off)

Maximum hourly rain (soil absorption)

Soil holding (save rain for next day)

ET period (definable start-of-day)

Historic Data (interpolated)

### MISCELLANEOUS:

- Rain Sensor terminals

- Flow sensor inputs at controller, with:

- Alarms: High, Unscheduled, Deviation, Main Pump Failure; adjustable delay (1 - 10 minutes)

Learn flow per Station

Maximum 250 pulses per second

## ORDERING OPTIONS

RKS = Controller, conventional, 1-25 zones

RKSXT-25 = 1-25 zone extension assembly

RKS-Z = Keycode, per individual zone

ET-300-W = Wireless weather station

SMS/SMP = Moisture sensors

\*Each cabinet of 25 Stations can operate 6 Stations simultaneously, given industry standard 0.25A per station, up to 12 Stations max for the system: 1 in each of 10 Programs and 2 in Manual mode.

† Stations from 26-50, 51-75, and 76-100 each require an additional NEMA enclosure.

‡ Requires yearly subscription for Tucor's Server access